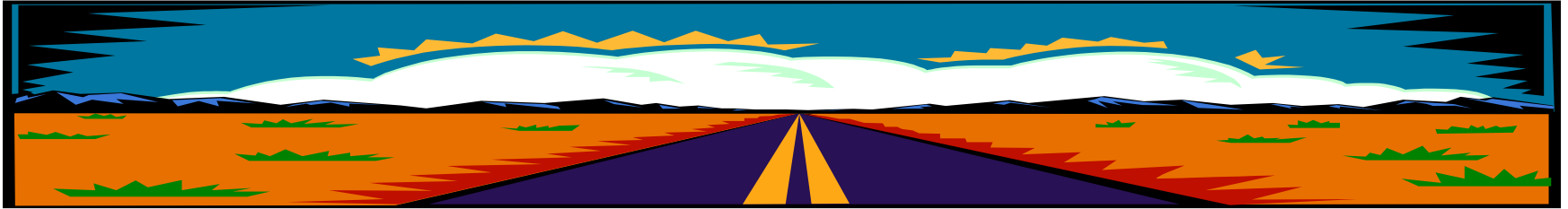


Process Room Services

Jan Karlshøj, IDM Coordinator
buildingSMART Process Room
Waltham, March 13, 2013

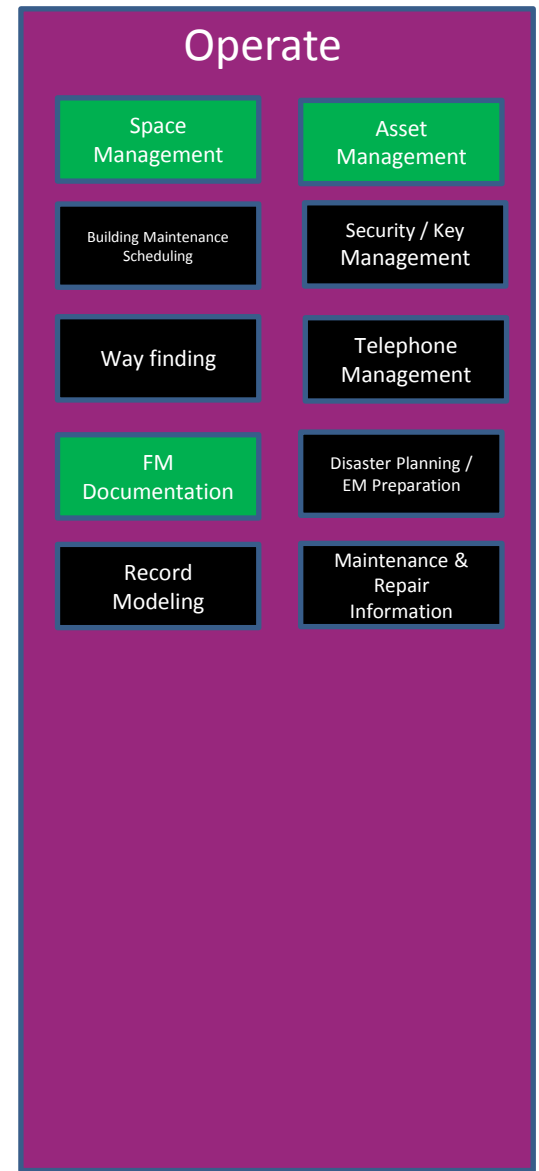
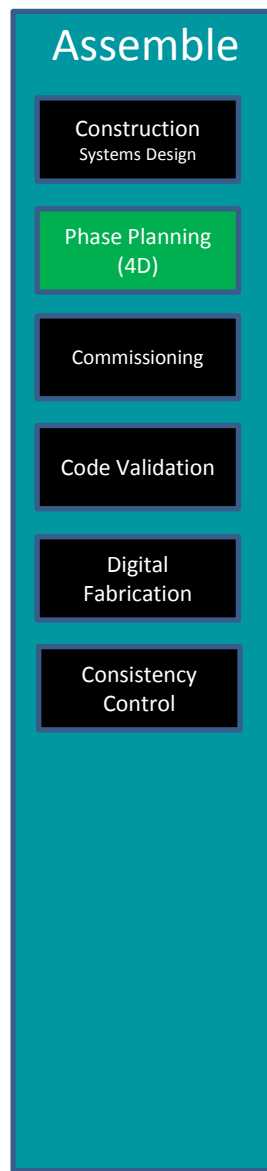
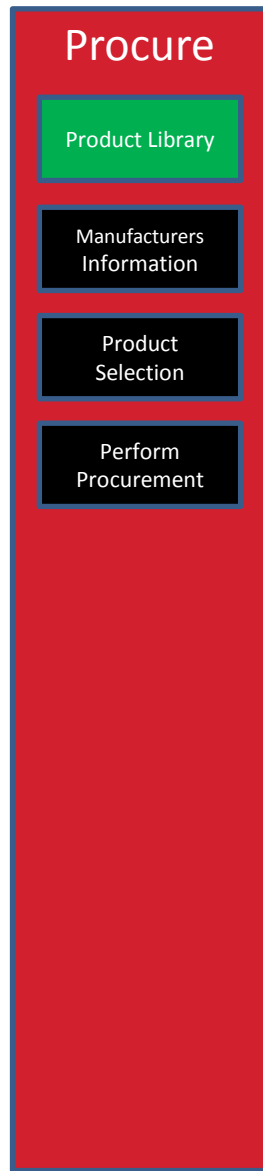
The way forward

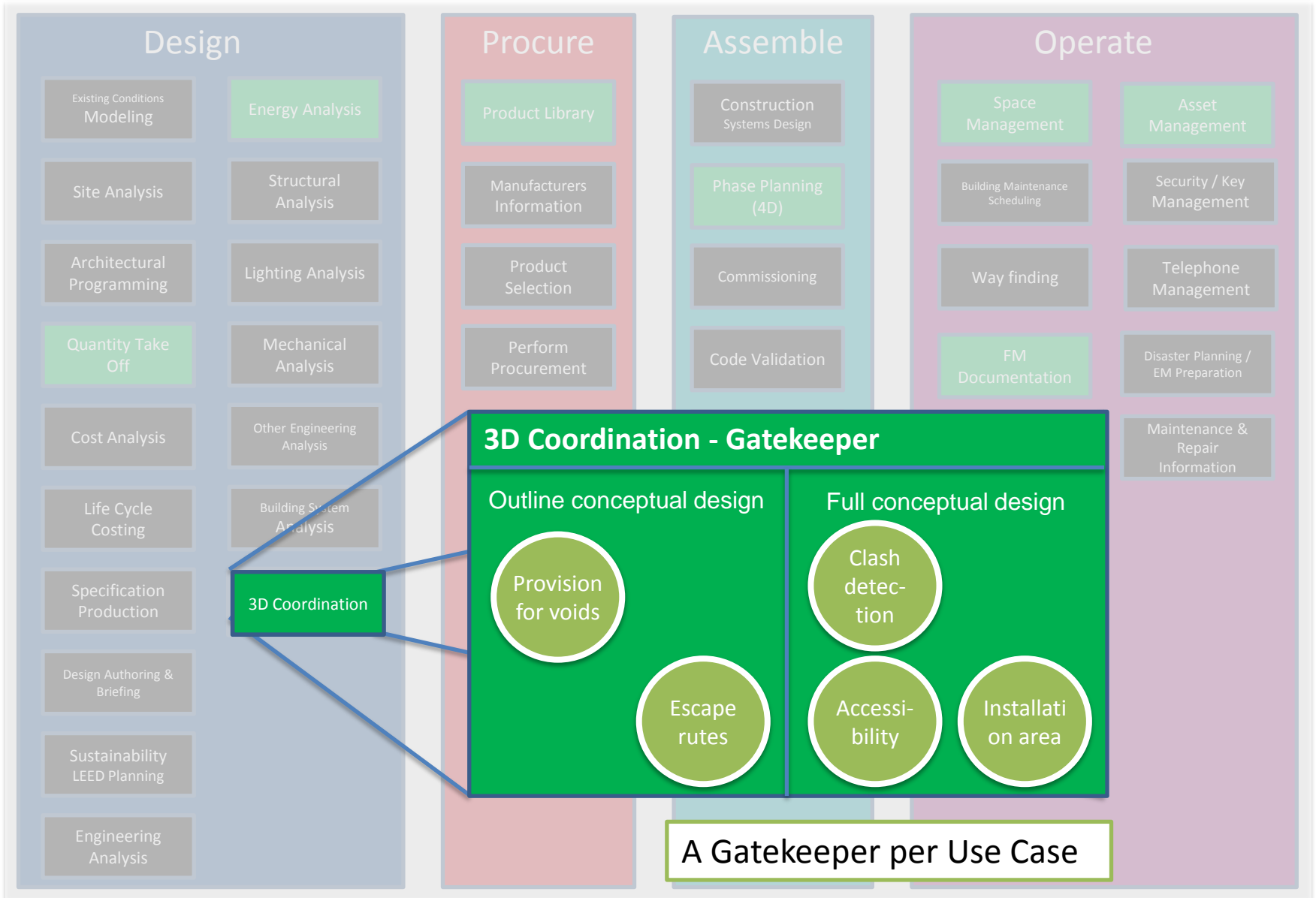


- **Status**
 - Many project ideas at chapter level
 - Too many IDMs haven't made it all the way through
 - Some international financed projects are making progress but are working outside the Process Room e.g. EU projects
 - Uneven and general weak response from IDM contacts when approached
- **Way forward**
 - Attract organisations that have business reasons to be active
 - Adjust the current methodology
 - Ease adoption of the methodology
 - Continue dialogue with Chapter IDM contact persons as a networking activity in relation to sharing of information
 - Create a self-sufficient financial system as central founding may drain out

Gatekeeper

Use Cases





A Gatekeeper per Use Case

- **Top priorities Use Cases**
 - 3. Architectural Programming
 - 39. FM Documentation
 - 33. Space Management and Tracking
 - 20. Product Library
 - 17. 3D Coordination
 - 32. Asset Management
 - 4. QTO
 - 29. Phase Planning (4D Modelling)
 - 11. Energy Analysis
- **Task**
 - Coordination between projects within the Use Case
 - Maintain a list of potential projects related to the Use Case
- **E.g. Chapter IDM Contact person**
 - Fall-back position: Process Room Leader

Project Execution

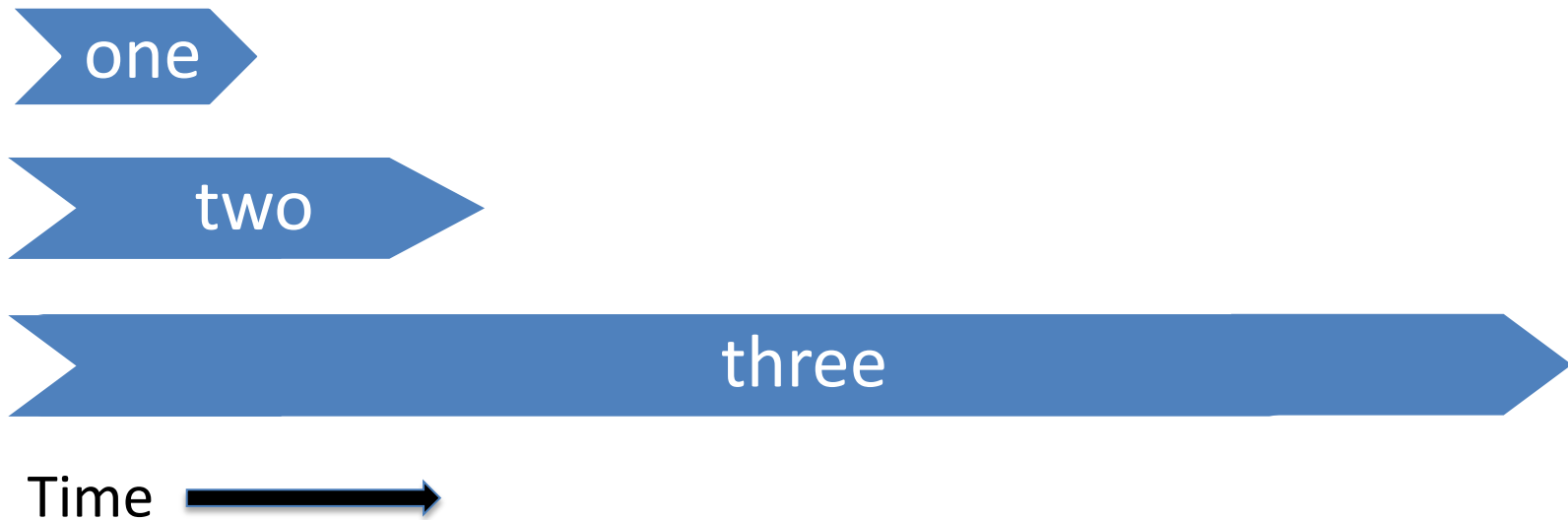
Project Support

- **Project Execution**

- Assist scoping of project proposals
- Single Point of Contact to buildingSMART
 - Contact to Implementation Support Group (ISG)
 - Contact to Model Support Group (MSG) related to potential extensions and change of the IFC specification
 - Contact to MVD Coordinator
- Ensure buildingSMART procedures are followed
- IDM Web site
 - Publish project information
 - Access to Issue/resolution database during review
 - Signing up procedure
 - Commenting material
- Support review process, including
- Validation of BPMN diagrams
- Cost: Minimum \$ 2,000 depending on the size of the project

Project Packages

Process Room - Packages



Process Room - Packages

- **General**

- It should be made clear that buildingSMART cannot guarantee that projects are completed, since buildingSMART has no control whether software companies will implement requirements in their products or not.
- buildingSMART can on the other hand facilitate the dialogue with the sponsor of the project, the buildingSMART community (IUG, MSG and ISG) and the software vendors. There has to be a compelling business reason for the software vendors to implement support of the specified processes and the related exchange requirements.
- buildingSMART can assist in specifying the business case, but it is the responsibility of the project owner to persuade the software companies to support the business case.

Process Room - Packages

- **Package zero – identify scope**
 - buildingSMART is providing assistance to scope the project and determine the appropriate package
- **Package one – use what is available and add necessary property sets**
 - buildingSMART is providing a list certified of process and modeling consultants to assists
 - the “client”, in order to identify needs and manage or assist the client’s project manager to control the necessary steps that are required
 - decisions on whether the results should be private, public or an official buildingSMART IDM
 - The limitations for package one is data exchange only can transferred by the existing data model and available software products
 - The certified buildingSMART consultant will assist the project team assist by
 - being the single point of contact to buildingSMART
 - assisting the project team in specifying requirements by making an IDM
 - assisting in setting up a (third party) data validation
 - assisting in setting up a (third party) user certification

Process Room- Packages

- **Package two – use the existing IFC specification, add necessary property sets and handle software implementation**
 - The certified buildingSMART consultants will assist the project team assist by
 - assisting the project team in specifying requirements by making an IDM
 - handling the dialogue with MSG in extending the IFC data schema
 - making the MVD
 - guide the software vendors to implement the MVD
 - assisting in setting up a (third party) software certification
 - assisting in setting up a (third party) data validation
 - assisting in setting up a (third party) user certification

Process Room - Packages

- **Package three – extent the existing IFC specification and handle software implementation**
 - like package two but also handling extension of the IFC schema.
 - Important: Inform the project owner about the timeframe could be years

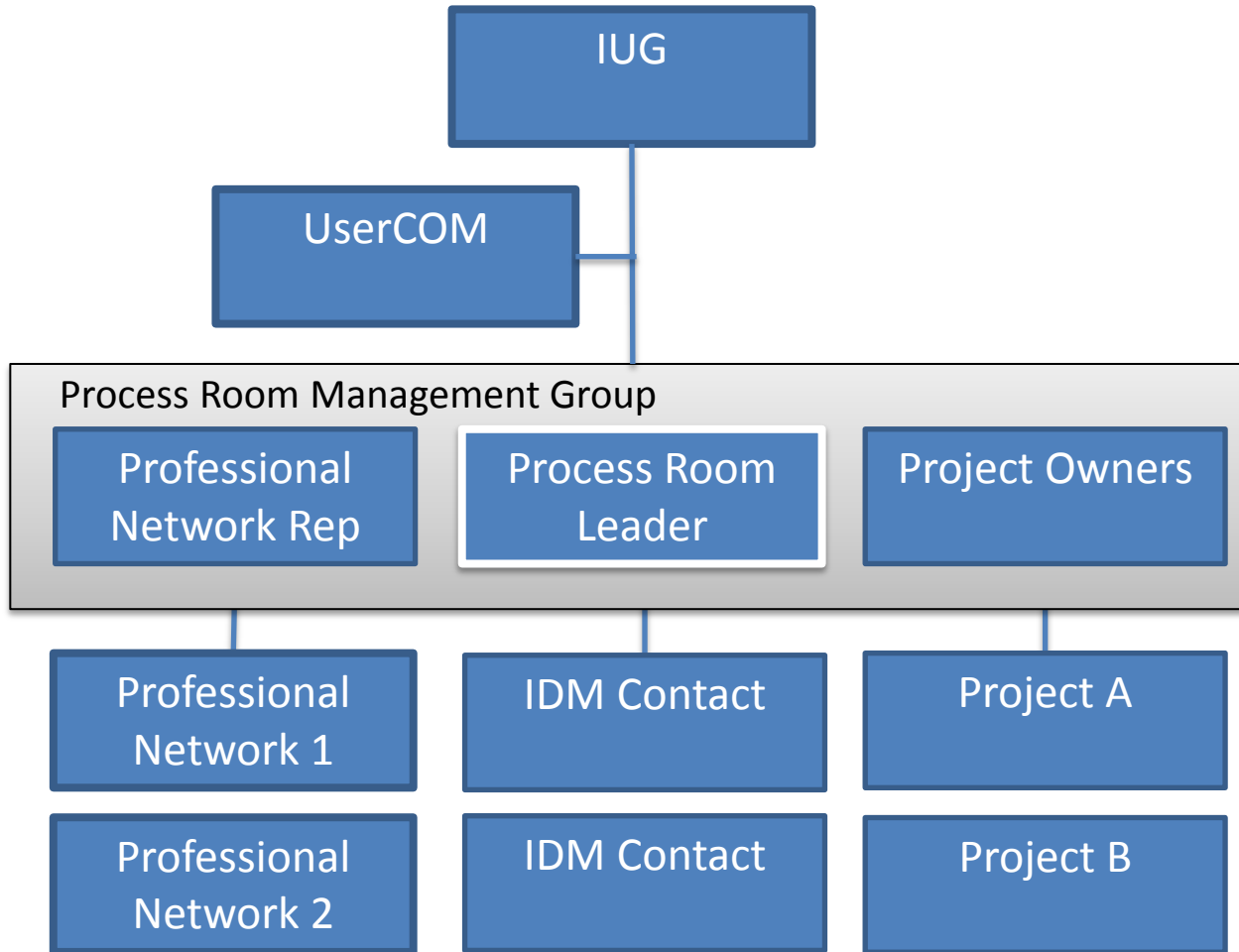
Professional Network

Professional Networks

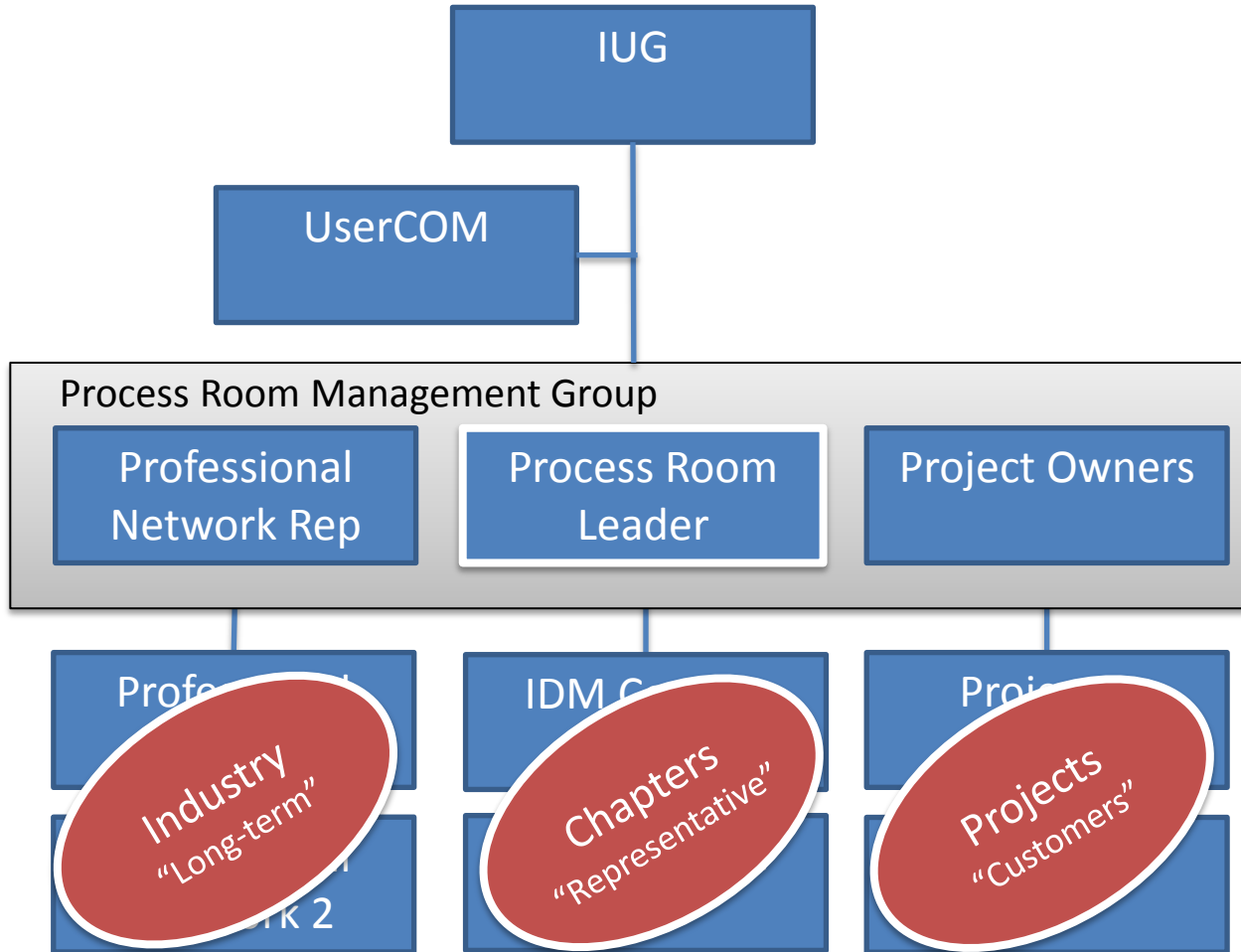
- **Support Networks**

- Bring professionals virtual together
- Focus solely on buildingSMART related issues
- Use the network to prioritize project ideas into funded project proposals
- Service
 - Arrange regularly Web meetings e.g. monthly documented with minutes of meetings
 - Draft scope for project proposals
- Potential Networks
 - Public client
 - Authorities
 - Energy Analyses
 - IFC and GIS
- Preferable: Minimum 4 organization coming 2 different chapters
- Cost: \$1,000 – 2,000

Process Room Organisation



Process Room Organisation



Future steps

Future steps

- **Establish and create income from**
 - Accreditation of Data Validation Services
 - End User Certification