

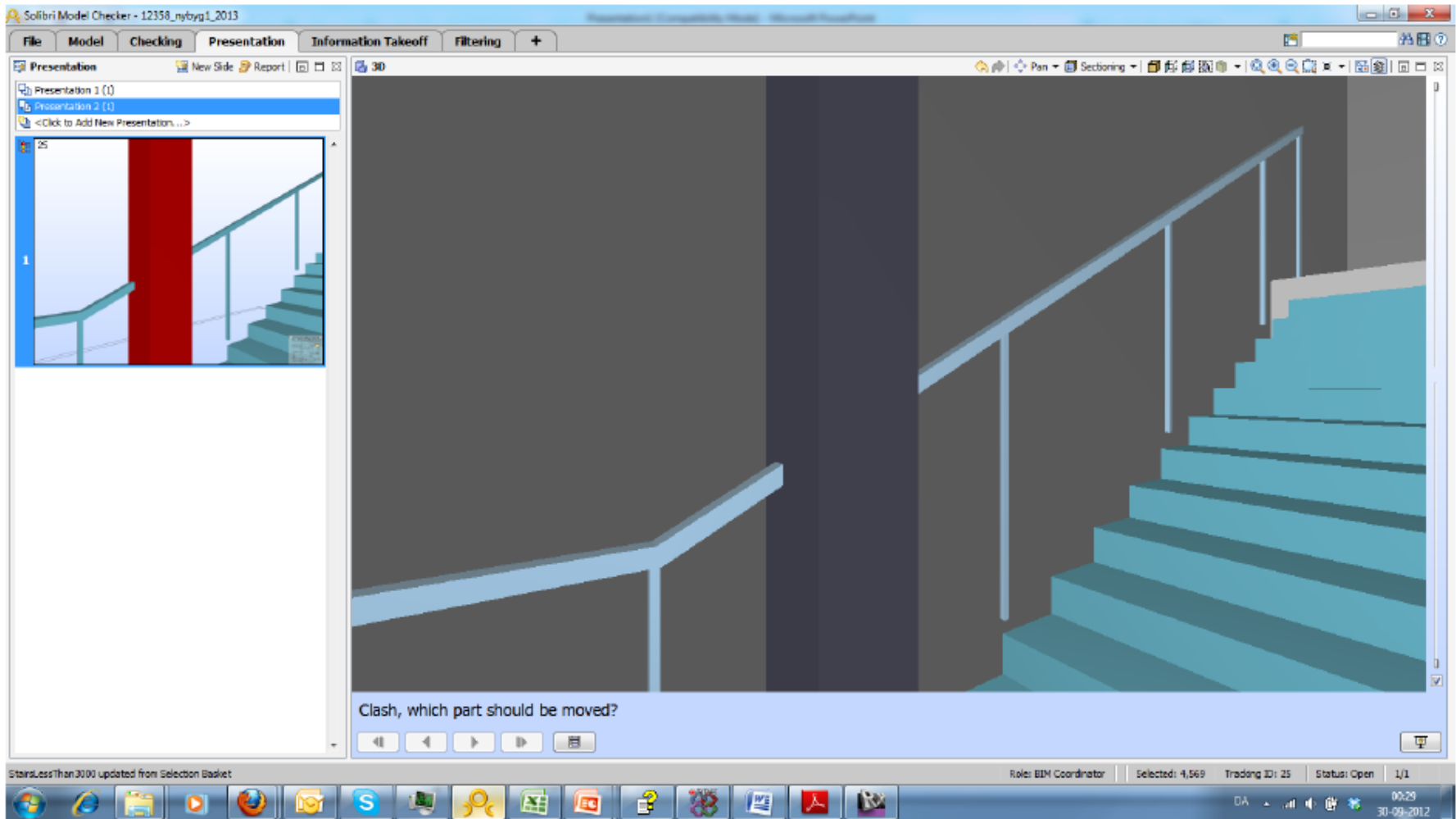
# BIM Collaboration Format

Jan Karlshøj, IDM Coordinator  
buildingSMART Process Room  
Waltham, March 14, 2013

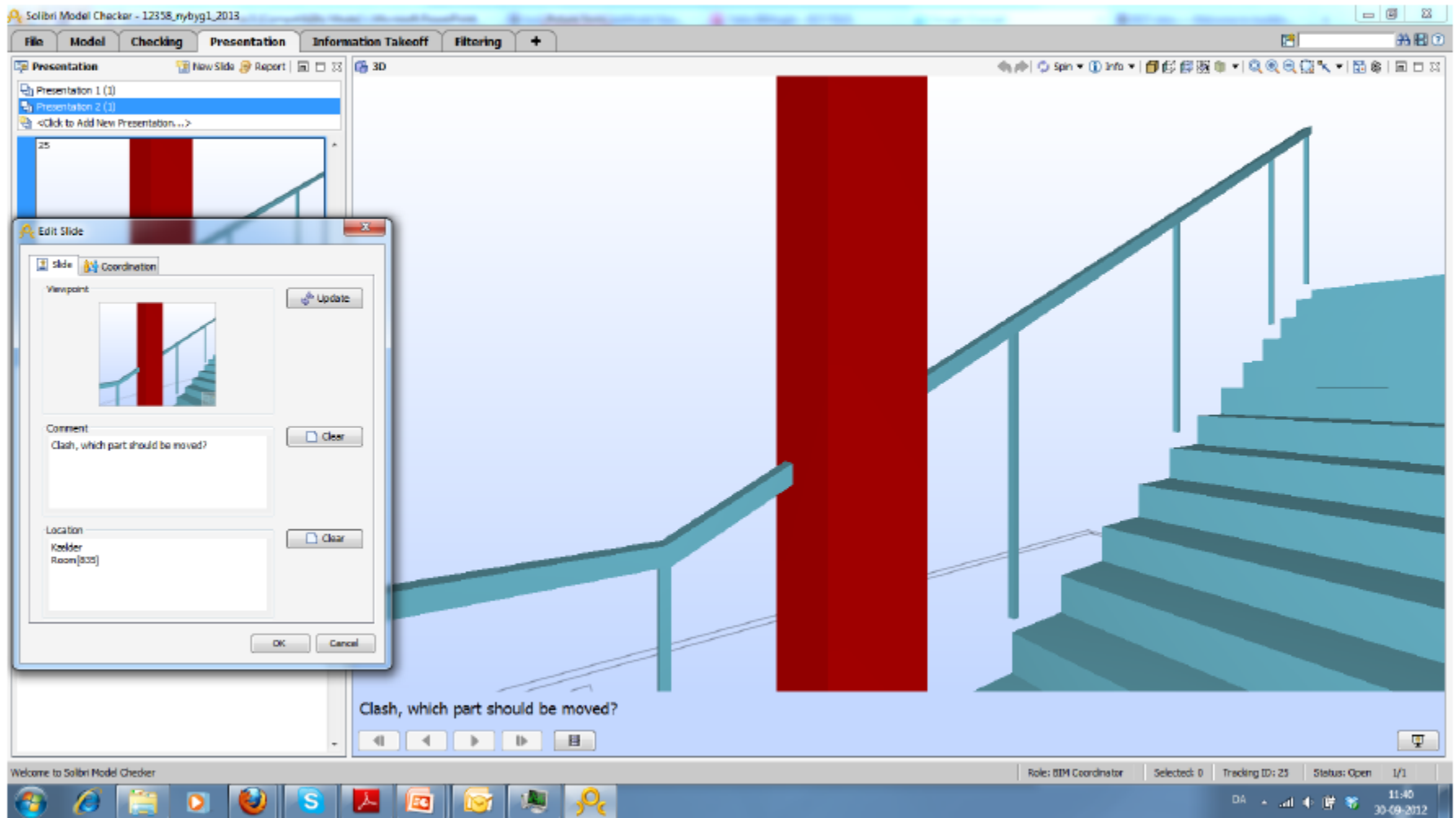
# BIM Collaboration

- **Author**
- **Message**
- **GUIDs**
- **Camera position, angle, target point**
- **Pictures**

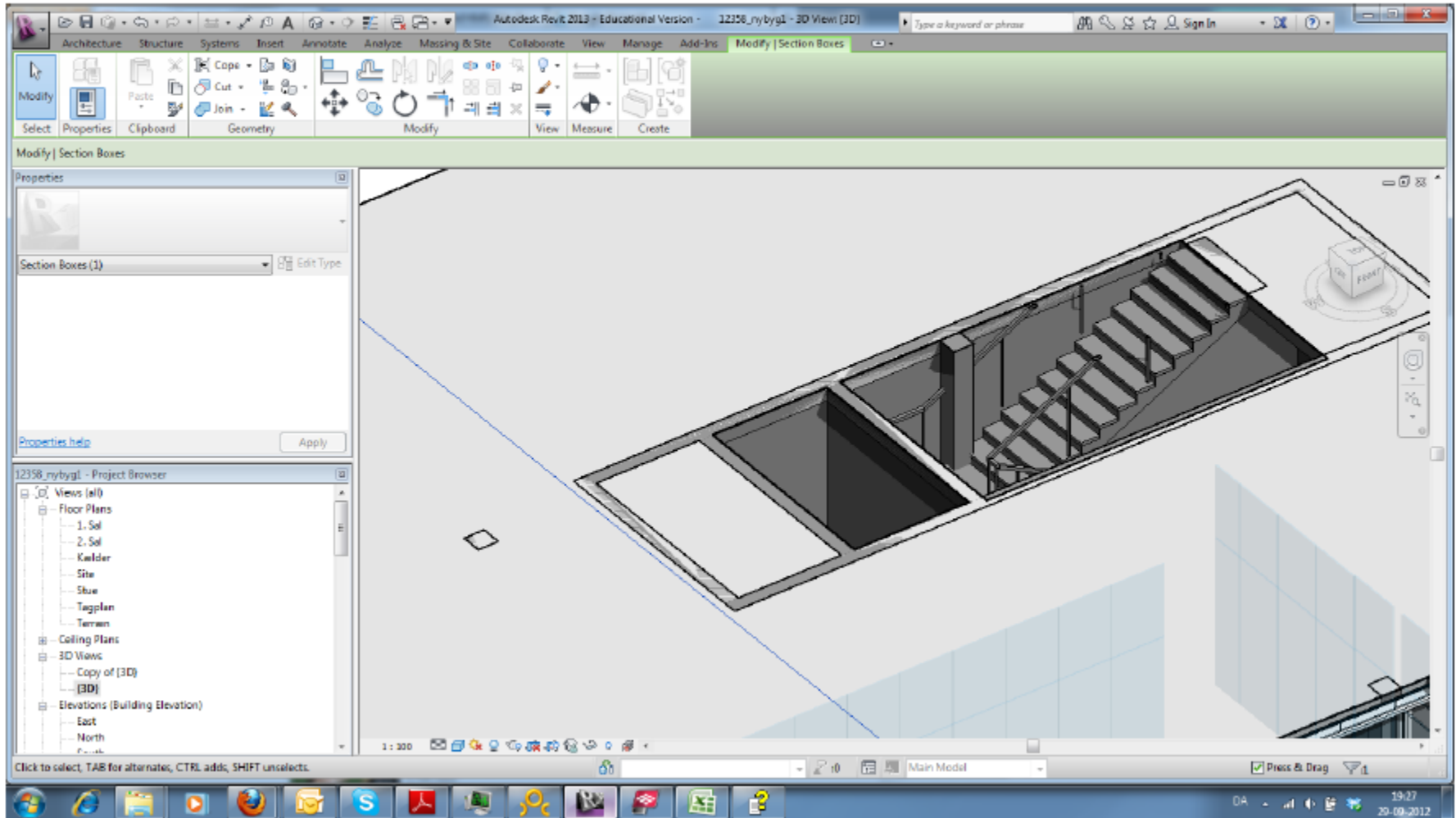
# BCF format



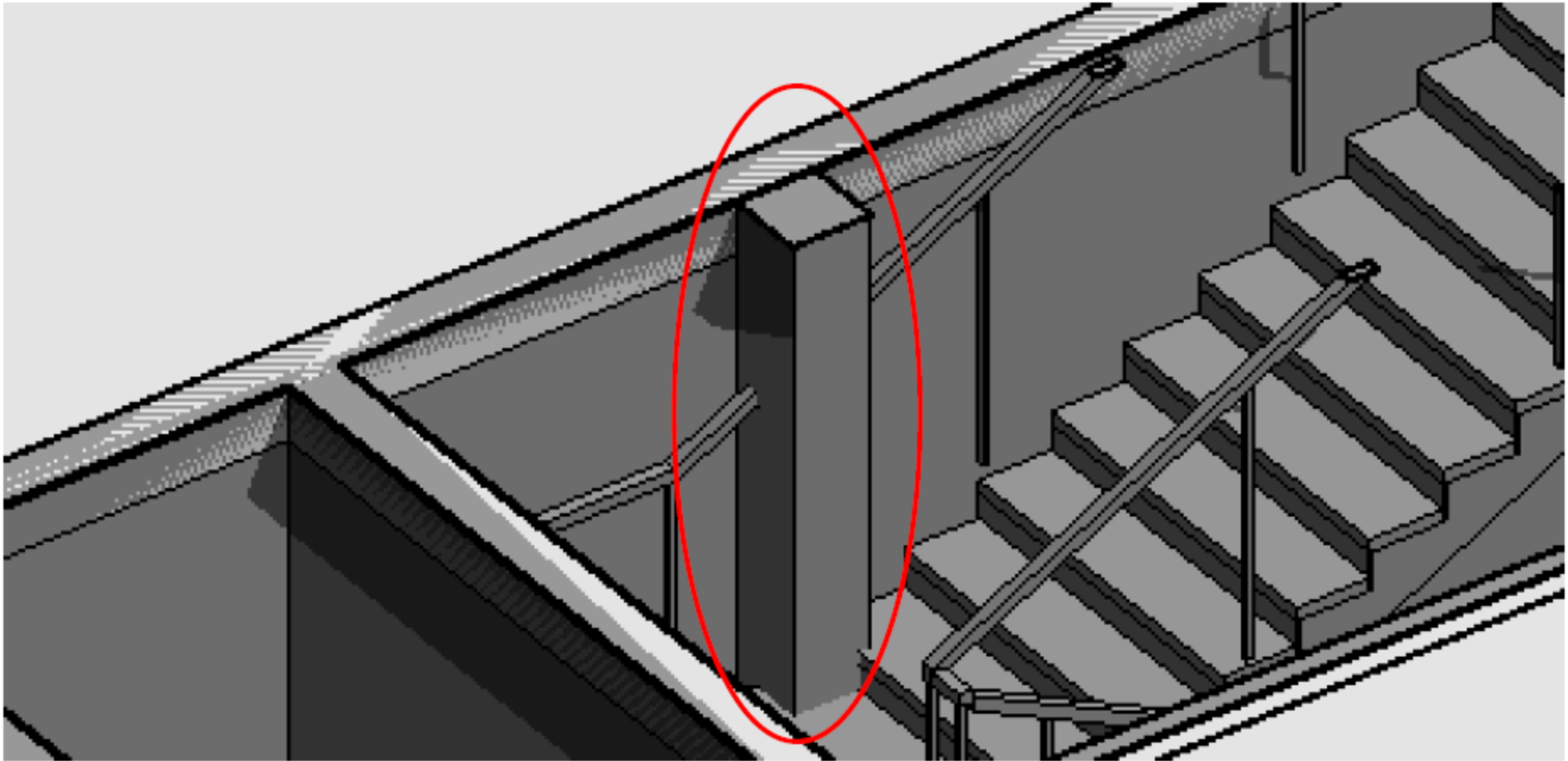
# BCF



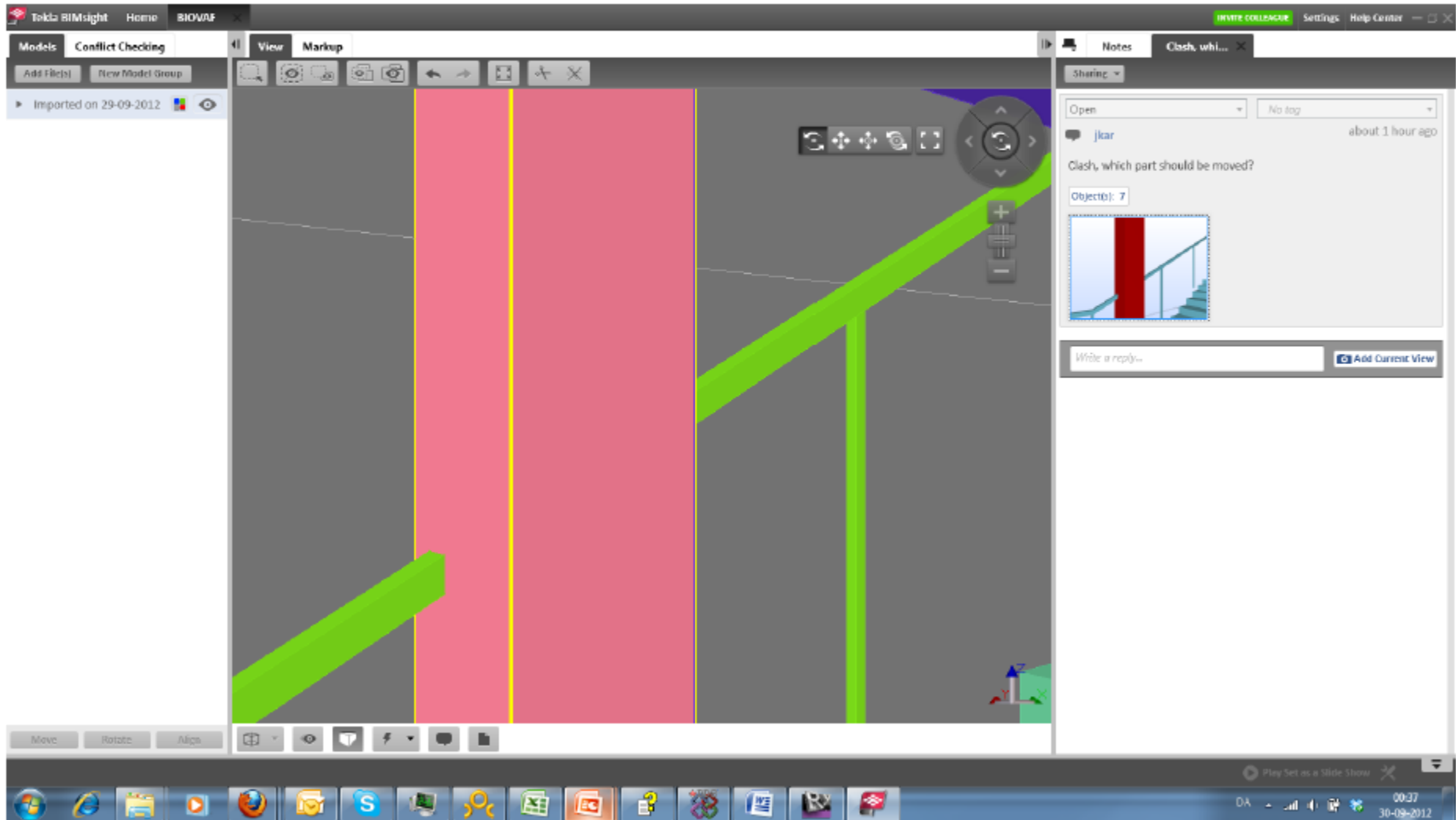
# BCF format



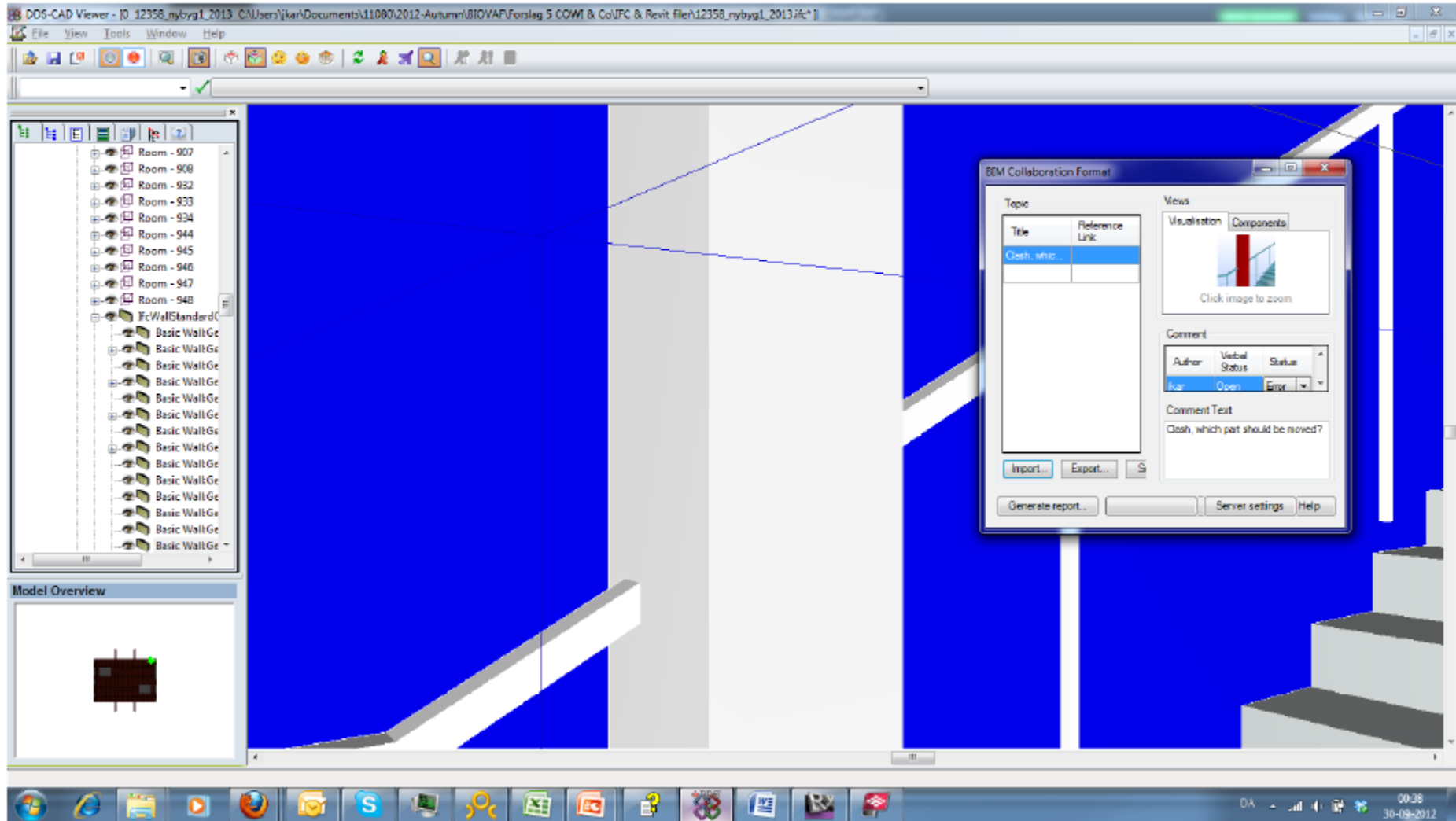
# BCF format



# BCF in Tekla BIMsight



# BCF in DDS-CAD Viewer





# BCF in Revit by CAD-Q tools

Internet Explorer - Top 15 Songs - Fleetwood Mac - You... - http://www.google...\_Vtb5Y3Rj2WY5w... - Google Oversæt - Cad-Q

www.cad-q.com/da/Sideshow/BIM-Collaboration-Format-BCF-til-Revit/

## CAD-Q

Hjem Ydelser Kalender Nyheder Om Cad-Q Select language

Start / BIM Collaboration Fo...

### BIM Collaboration Format (BCF) til Revit

Som den første virksomhed i verden, kan vi nu tilbyde vores Revit kunder BCF, dvs BIM Collaboration Format.

BIM Collaboration Format (BCF) blev oprindeligt udviklet af Tekla og Solibri og er nu understøttet af buildingSMART.

**Sådan fungerer det:**

BCF indeholder en mekanisme for brugere af BIM-applikationer til at kommunikere spørgsmål og henvise dem til specifikke objekter i IFC-modellen. Dette kan for eksempel være et "dash" eller "outside boundaries" -problem. Problemet kan findes ved hjælp Solibri Model Checker, men skal behandles i Revit. Ved hjælp af BCF kan man åbne den originale BIM-model og se nøjagtig den samme "visning", som man så i de fælles IFC-modeller, løse problemet, angive status som løst i BCF og efterfølgende eksportere en ny IFC model, når det er tid til en ny koordinering.

Formatet angiver med andre ord den måde, den projekterende og andre aktører kan kommunikere og overføre meddelelser, indsatsområder, kommentarer og screenshots til specifikke komponenter i en model, til andre i projekteringen. Det er et stort skridt fremad at lette kommunikationen mellem Tekla, Solibri Model Checker og Revit modellen.

Kontakt os for mere information - +45 70 10 71 10 | info@cad-q.dk

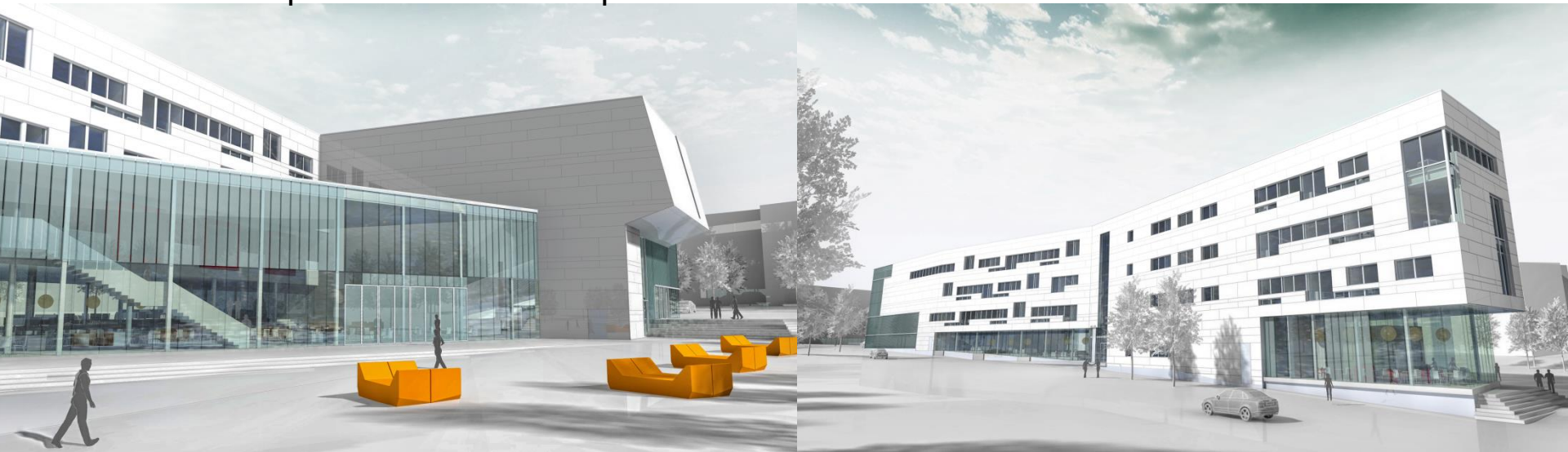
Skal vi kontakte dig?

# Pilot Project

- **JUUL | FROST Arkitekter**

- Weekly exchange / bi-weekly Skype sessions

In the spring of 2013, the business school project on the stage as in Sweden called system action phase, which runs parallel to the regulatory project. Our current experience has been that we have recognized that an exchange process once a week to suit the project character and state. We use Solibri Model Checker because it has a free viewer that works on all platforms. This viewer can all advisors identify the challenges the team faced and comment on them. Then exported comments via BCF and added into the common model so that the next exchange session is created with an overview of all. BCF has the advantage that all comments are collected in a model instead of the parties involved should compare an excel sheet per. advisor.



# Pilot Project

- **JUUL | FROST Arkitekter**

- The exchange of common model followed by a Skype meeting every other week, where we face assesses the project's progression and jointly navigate the model, and both project-related agreements as well as modeling technical changes and procedures. This combined with physical meetings, development and design team holds when there is a need for this.

As it usually is unwilling to share one's unfinished work, there are at School project agreed to the involved consultants export their models as snapshots - and that everyone is aware that they see their partner's work in progress models. Therefore validated only selected areas in the models.

## FACTS

Project: School with an auditorium for 700 people

Client: Örebroporten

Period: 2011 - 2014

Area: 6.600m<sup>2</sup>

Software platforms that cooperate in the project

Autodesk Revit 2013 IFC: IFC2X3

MagiCAD HPV 2011.11 IFC: IFC2X3

AutoCAD MEP 2011 IFC: IFC2X3

ArchiCAD-64 IFC: IFC2X3

# In which situations can BCF be used?

- **Issues e.g. collision**
- **Navigation**
- **Information**
- **One object several**
  - Link between QTO and model
- **Architectural Competition**
  - Document camera position, angle and target point per visualizations
  - Or make visualizations according to a BCF file
- **Parts in a system**
  
- **Cloud/Management system**
  - Monitor progress
  - Issues open/in progress/closed